



www.jacksongrundy.com

Willow View, Kislingbury, NN7 4AU

£220,000 - Offers in Excess of Bungalow

 2  1  1



**Platinum Trusted
Service Award**

Based on service ratings
over the past year

feefo

Department: Sales

Tenure: Freehold



Jackson Grundy Estate Agents - Duston
52 Main Road, Duston, Northampton, NN5 6JF

Call Us 01604 755757
Email Us duston@jacksongrundy.co.uk





Property Summary

Jackson Grundy are delighted to welcome to the market this rarely available two bedroom semi-detached bungalow in the desirable village location of Kislingbury.

Features & Utilities

- ✓ Bungalow
- ✓ No Chain
- ✓ Rarely Available Two Bedroom Semi Detached
- ✓ Popular Village Location
- ✓ Off Road Parking
- ✓ Gas Radiator Heating & Double Glazing

Property Overview

Jackson Grundy are delighted to welcome to the market this rarely available two bedroom semi-detached bungalow in the desirable village location of Kislingbury. The accommodation comprises entrance hall, lounge, kitchen, bathroom and two bedrooms. There are gardens to the front and rear plus off road parking. The property is offered with no onward chain. Please call to view. EPC Rating: TBC. Council Tax Band: B

HALL

Obscure double glazed entrance door. Tiled floor. Cupboard housing combination boiler and fuse-board.

KITCHEN 3.01m x 2.29m (9'10" x 7'6")

Double glazed door and window to side elevation. Wall and base units. Splash back tiling. Tiled floor. Stainless steel sink with mixer tap. Radiator.

LOUNGE 4.62m x 2.72m (15'1" x 8'11")

Double glazed window to front elevation. Radiator. Coving Door to inner hall.

INNER HALL

Access to loft space. Doors to:

BATHROOM 1.94m x 1.62m (6'4" x 5'3")

Obscure uPVC double glazed window to side elevation. Heated towel rail. Suite comprising pedestal hand wash basin, WC and panelled bath with electric shower over. Splash back tiling.

BEDROOM ONE 4.52m x 2.72m (14'9" x 8'11")

Double glazed window to rear elevation. Radiator. Storage cupboard.

BEDROOM TWO 3.45m x 2.70m (11'3" x 8'10")

Double glazed sliding door to rear elevation, leading to garden. Radiator.

OUTSIDE

FRONT GARDEN

Off-road parking and stoned frontage.

REAR GARDEN

Patio. Side access. Timber framed outbuilding with power and light.

DRAFT DETAILS

At the time of print, these particulars are awaiting approval from the Vendor(s).

MATERIAL INFORMATION

Type – Bungalow

Age/Era – Ask Agent

Tenure – Freehold

Ground Rent – Ask Agent

Service Charge – Ask Agent

Council Tax – Band B

EPC Rating – Ask Agent

Electricity Supply – Mains

Gas Supply – Mains

Water Supply – Mains

Sewerage Supply – Mains

Broadband Supply – Ask Agent

Mobile Coverage – Depends on provider

Heating – Central Heating, Gas Central Heating

Parking – Off-street

EV Charging – Ask Agent

Accessibility – Ask Agent

Coastal Erosion Risk – Ask Agent

Flood Risks – Has not flooded in the last 5 years, No flood defences

Mining Risks – Ask Agent

Restrictions – Ask Agent

Obligations – No restrictions, No private right of way, No Public right of way

Rights and Easements – Ask Agent

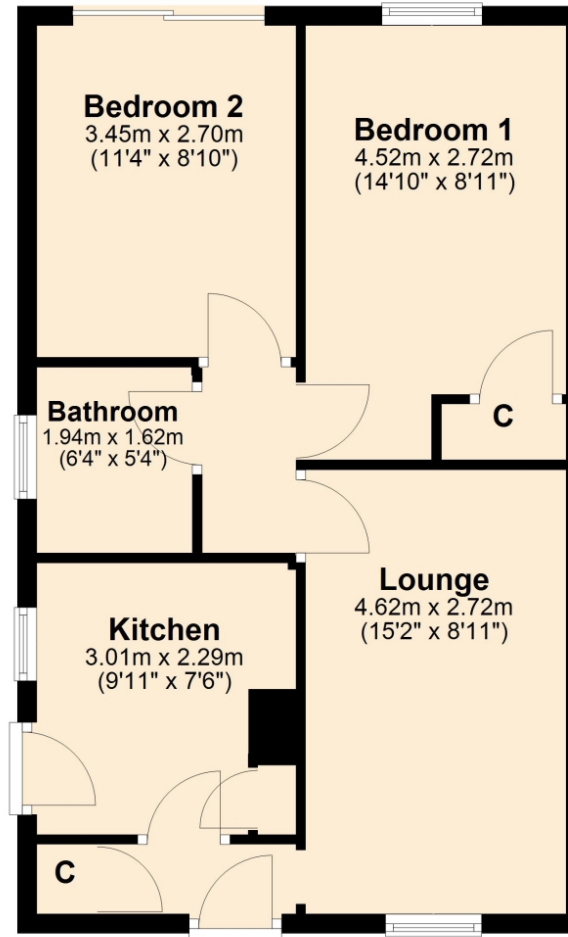
AGENTS NOTES

i Viewings by appointment only through us ii These particulars do not form part of any offer or contract and should not be relied upon as statements or representation of fact. They are not intended to make or give representation or warranty whatsoever in relation to the property and any intending purchaser or lessee should satisfy themselves by inspection or otherwise as to the correctness of the same iii Photographs illustrate parts of the property as were apparent at the time they were taken iv Any areas, measurements, distances or illustrations are approximate for reference only v We have not tested the appliances, services and specific fittings, an intending purchaser must satisfy himself by inspection by independent advice and/or otherwise to this property.

Floorplan

Ground Floor

Approx. 50.6 sq. metres (544.9 sq. feet)



Total area: approx. 50.6 sq. metres (544.9 sq. feet)



Thank you for your interest

Feel free to contact us or submit a viewing request. Our dedicated property experts are available and ready to assist you.

www.jacksongrundy.com

Jackson Grundy Estate Agents is a division of Jackson Grundy Ltd
Registered office: Gough Lodge, Main Road, Duston, Northampton, NN5 6JJ - Company Registration No: 3636152