



www.jacksongrundy.com

Ryehill Close, Long Buckby, Northamptonshire, NN6 7NR

£165,000 Ground Flat

2 1 1



**Platinum Trusted
Service Award**

Based on service ratings
over the past year

feefo

Department: Sales

Tenure: Leasehold



Jackson Grundy Estate Agents - Long Buckby
3 Market Place, Long Buckby, Northampton, NN6 7RR

Call Us 01327 842093
Email Us longbuckby@jacksongrundy.co.uk





Property Summary

A large ground floor two bedroom apartment situated near the edge of the village but just a walk from the many village amenities and railway station. It has a hall, lounge, good sized kitchen / dining room, two double bedrooms, box room, bathroom and separate WC.

Features & Utilities

- ✓ Ground Floor Apartment
- ✓ Two Double Bedrooms
- ✓ Kitchen / Dining Room
- ✓ uPVC Double Glazing
- ✓ Radiator Heating
- ✓

Property Overview

A large ground floor two bedroom apartment situated near the edge of the village but just a walk from the many village amenities and railway station. It has a hall, lounge, good sized kitchen / dining room, two double bedrooms, box room, bathroom and separate WC. There is radiator heating, uPVC double glazing, use of the gardens and an intercom system for security. EPC Rating C. Council Tax Band A.

ENTRANCE HALL

Entrance via front door. Radiator. Storage cupboard. Airing cupboard.

LOUNGE 4.62m x 3.12m (15'2 x 10'3)

Windows to front and side elevations. Radiator.

KITCHEN / DINING ROOM 3.07m x 4.93m (10'1 x 16'2)

Two windows to rear elevation. Radiator. Fitted with a range of wall, base and drawers units with work surfaces over. Built in oven, hob and extractor hood. Stainless steel sink unit. Tiled splash backs.

BEDROOM ONE 3.68m x 3.07m (12'1 x 10'1)

Window to front elevation. Radiator.

BEDROOM TWO 3.68m x 2.77m (12'1 x 9'1)

Window to front elevation. Radiator.

BOX ROOM

Window to rear elevation.

BATHROOM 1.57m x 1.57m (5'2 x 5'2)

Window to rear elevation. Radiator. Suite comprising bath with shower and screen over and wash hand basin.

WC

Radiator. WC.

DRAFT DETAILS

At the time of print, these particulars are awaiting approval from the Vendor(s).

MATERIAL INFORMATION

Electricity Supply – Mains

Gas Supply – Mains

Electricity/Gas Supplier – <https://www.ofgem.gov.uk/information-consumers/energy-advice-households/finding-your-energy-supplier-or-network-operator>

Water Supply – Mains

Sewage Supply – Mains

Broadband – <https://www.openreach.com/fibre-checker>

Mobile Coverage – <https://checker.ofcom.org.uk/en-gb/mobile-coverage>

Solar PV Panels – None

EV Car Charge Point – None

Primary Heating Type – Gas

Parking – None

Accessibility – Ask Agent

Right of Way – Ask Agent

Restrictions – Ask Agent

Flood Risk – <https://flood-map-forplanning.service.gov.uk/>

Property Construction – Ask Agent

Outstanding Building Work/Approvals – Ask Agent

LEASEHOLD INFORMATION

We have been advised of the following: –

Service Charge – £45.15 PCM

Review Date – TBC

Ground Rent: £8 PCM

Length of Lease: 91 years remaining on lease

This information would need to be verified by your chosen legal representative.

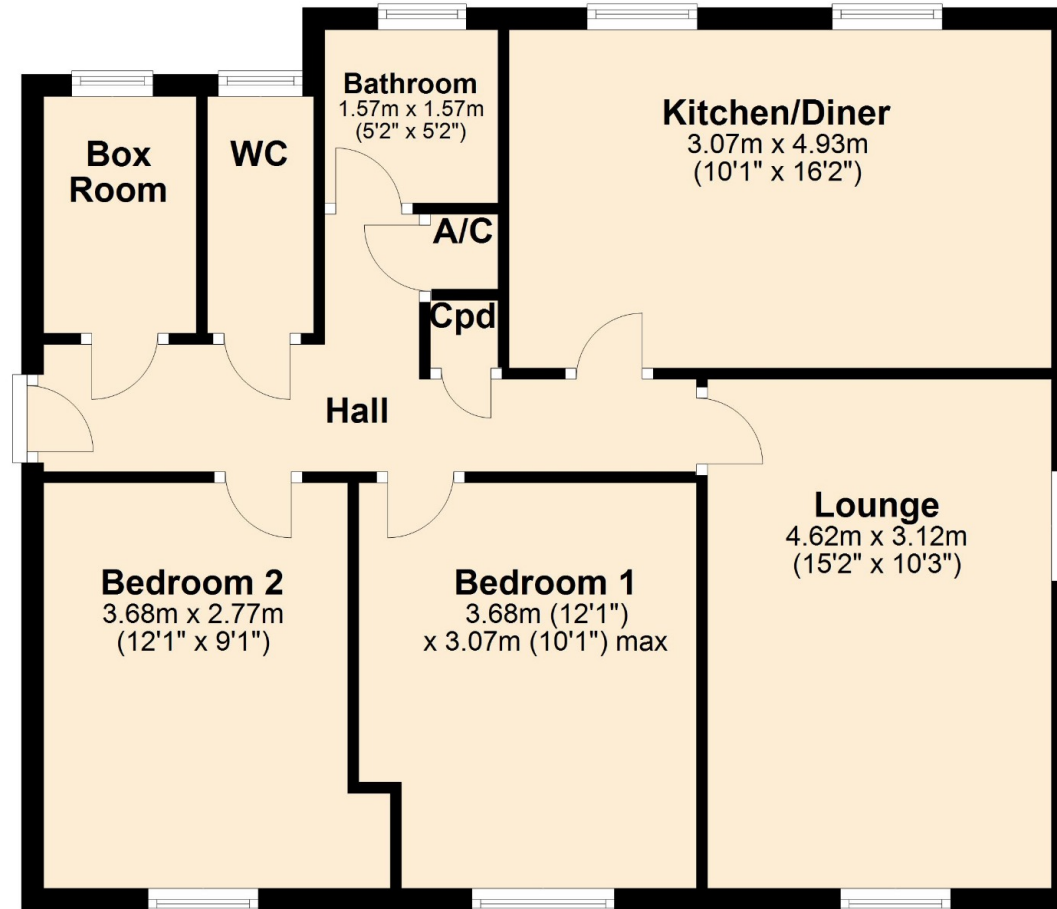
AGENTS NOTES

i Viewings by appointment only through Jackson Grundy ii These particulars do not form part of any offer or contract and should not be relied upon as statements or representation of fact. They are not intended to make or give representation or warranty whatsoever in relation to the property and any intending purchaser or lessee should satisfy themselves by inspection or otherwise as to the correctness of the same iii Photographs illustrate parts of the property as were apparent at the time they were taken iv Any areas, measurements, distances or illustrations are approximate for reference only v We have not tested the appliances, services and specific fittings, an intending purchaser must satisfy himself by inspection by independent advice and/or otherwise to this property.

Floorplan

Ground Floor

Approx. 69.8 sq. metres (751.7 sq. feet)



Total area: approx. 69.8 sq. metres (751.7 sq. feet)



Thank you for your interest

Feel free to contact us or submit a viewing request. Our dedicated property experts are available and ready to assist you.

www.jacksongrundy.com

Jackson Grundy Estate Agents is a division of Jackson Grundy Ltd
Registered office: Gough Lodge, Main Road, Duston, Northampton, NN5 6JJ - Company Registration No: 3636152

Jackson Grundy Estate Agents - Long Buckby
3 Market Place, Long Buckby, Northampton, NN6 7RR

Call Us 01327 842093
Email Us longbuckby@jacksongrundy.co.uk

