



[www.jacksongrundy.com](http://www.jacksongrundy.com)

# Rose Tree Close, Moulton, Northamptonshire, NN3 7SU

£550,000 - Offers Over Detached

 4  2  2



**Platinum Trusted  
Service Award**

Based on service ratings  
over the past year

**feefo**

Department: Sales

Tenure: Freehold







## Property Summary

Located on a quiet cul-de-sac within the ever popular village of Moulton to the north of Northampton is this well presented and extended four bedroom detached family home that has been heavily improved by the current owners.

## Features & Utilities

- ✓ Open Plan Kitchen / Dining Room
- ✓ Sitting Room
- ✓ Study / Play Room
- ✓ Four Bedrooms
- ✓ En-Suite & Family Bathroom
- ✓ Landscaped Rear Garden
- ✓ Off Road Parking
- ✓ Garage

## Property Overview

Located on a quiet cul-de-sac within the ever popular village of Moulton to the north of Northampton is this well presented and extended four bedroom detached family home that has been heavily improved by the current owners.

To the ground floor they have created a spectacular and modern kitchen with large central island and high specification appliances including three Neff ovens, Neff hob and Quooker tap. From the kitchen you walk into the extension which is now an airy dining and entertaining area complete with sky lantern and bi-fold doors onto the landscaped garden. Downstairs also benefits from a large sitting room with a bay window, playroom/study, utility and WC.

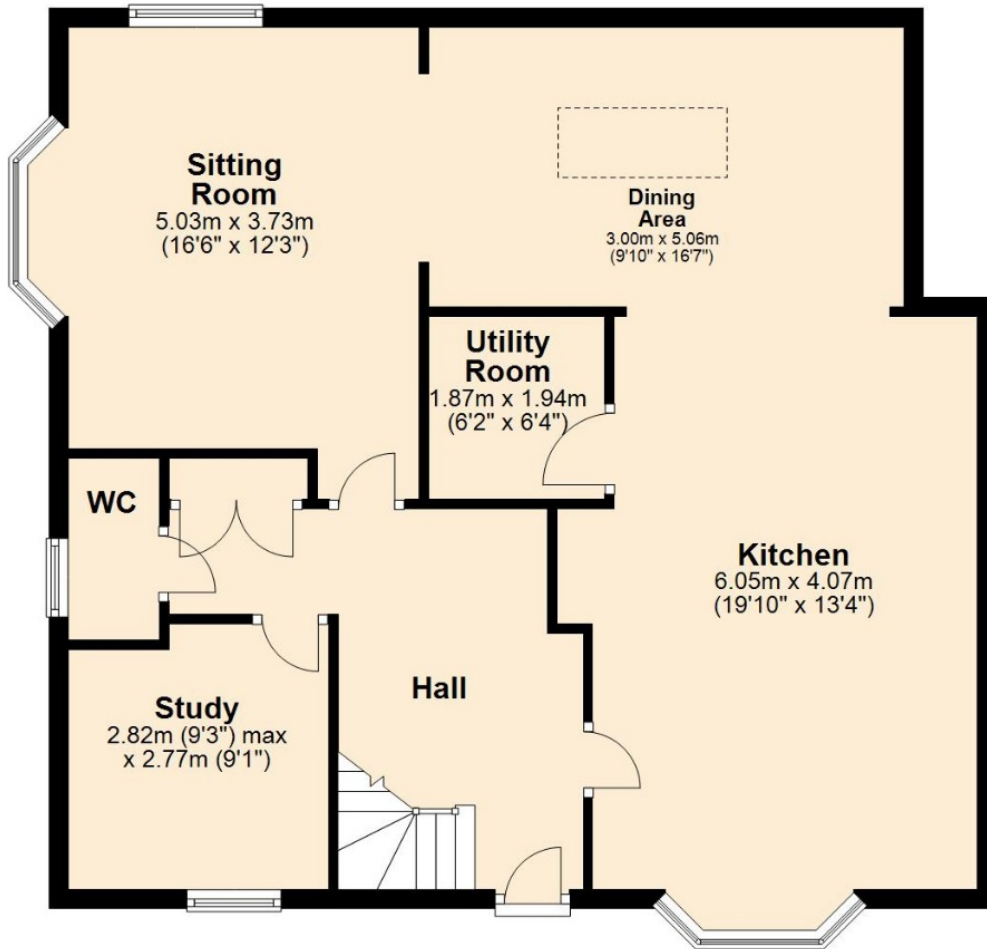
The first floor offers a large principle bedroom with fitted wardrobes and en-suite, three further bedrooms all with fitted wardrobes and a family bathroom.

Outside to the front is a lawned garden with maturing birch trees, bedded borders and double width driveway leading toward a double garage. The rear garden has been landscaped with artificial grass, fitted children's swing and raised decked area.

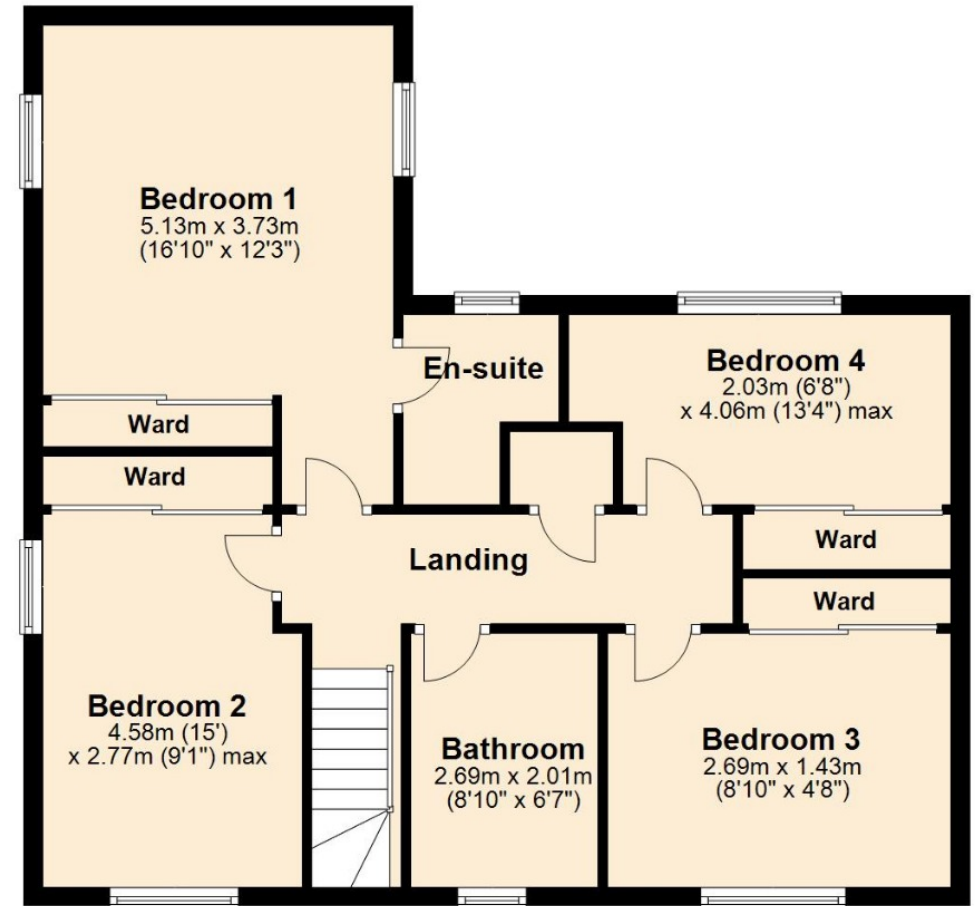
EPC Rating C. Council Tax Band F.

# Floorplan

## Ground Floor



## First Floor



Total area: approx. 149.3 sq. metres (1607.0 sq. feet)



# Thank you for your interest

Feel free to contact us or submit a viewing request. Our dedicated property experts are available and ready to assist you.

[www.jacksongrundy.com](http://www.jacksongrundy.com)

Jackson Grundy Estate Agents is a division of Jackson Grundy Ltd  
Registered office: Gough Lodge, Main Road, Duston, Northampton, NN5 6JJ - Company Registration No: 3636152